



CARPENTER ACE

Carpenter ACE has more smart details than ever!



Carpenter ACE is the name of Björnkkläder's work-tough, and trendy collection for craftsmen who require a high standard of function, comfort, and design. Here you find a thorough collection with carpenter pants, jackets, sweatshirts, shirts, t-shirts, etc. The garments can be combined in many different ways to give you the best result for a good day at work, and Carpenter ACE, of course, has the right look even for your leisure time activities. In addition, many of the garments are Öko-tex certified, see our website for more information.

Tool pocket trousers, Carpenter ACE

Carpenter pants with many functional pockets and compartments for tools, keys, etc. There are tool pockets, double hammer loops, zippered leg pockets, cell phone -, linked -, bits -, ID card -, and pen pocket. A little pocket on the lower leg makes working on your knees easier. Many of the pockets are reinforced for durability. Reflective detail on the left leg gives a bit of visibility in the dark. A removable key band is in the right pocket. Pants are reinforced with polyester in vulnerable areas. Use approved long kneepads, order nr: 972 294, 972 290 or 972 292. Fabric: Canvas, 100% cotton, 350g/m².

Size: 42 - 60, 44 - 60, 92 - 124, 148 - 156

OrderNo: 675070846 Clay
675070869 Navy
675070899 Black



High-water trousers, Carpenter ACE

The same functional details as the carpenter pants. The leg bottom width of the highwater pant is drawstring adjustable. Use approved short kneepads, order nr: 972291 or 972293. Fabric: Canvas, 100% cotton, 350g/m².

Size: 44 - 62

OrderNo: 680070846 Clay
680070869 Navy
680070899 Black

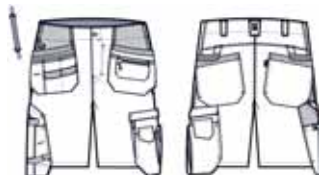


Shorts, Carpenter ACE

The same functional details as the carpenter pants but the shorts do not have pockets for kneepads. Fabric: Canvas, 100% cotton, 350g/m².

Size: 44 - 62

OrderNo: 040070846 Clay
040070869 Navy
040070899 Black



ACE-trousers in a cool new colour!



New!



Tool pocket trousers, Carpenter ACE

Carpenter pants with many functional pockets and compartments for tools, keys, etc. There are tool pockets, double hammer loops, zippered leg pockets, cell phone -, linked -, bits -, ID card -, and pen pocket. A little pocket on the lower leg makes working on your knees easier. Many of the pockets are reinforced for durability. Reflective detail on the left leg gives a bit of visibility in the dark. A removable key band is in the right pocket. Pants are reinforced with polyester in vulnerable areas. Use approved long kneepads, order nr: 972 294, 972 290 or 972 292. Fabric: Canvas, 100% cotton, 350g/m².

Size: Men: 42 - 60, Women: See table to the right!

OrderNo: 675070875 Ocean



Fits both men & women!



 34/42 Björnkläder	 36/44 Björnkläder
 38/46 Björnkläder	 40/48 Björnkläder
 42/50 Björnkläder	 44/52 Björnkläder
 46/54 Björnkläder	 48/56 Björnkläder
 50/58 Björnkläder	 52/60 Björnkläder



Cargo pants, Carpenter ACE

Cargo pants with practical leg pocket (with zipper), cell phone and pen pockets. A removable key band is in the right pocket. The fabric feels like cotton but is a cotton/poly blend that is strong and colourfast. The brushed backside gives a nice feel to the garment. Öko-Tex certified. Fabric: Canvas, 65% polyester/ 35% cotton, 310g/m².

Size: 44 - 60, 92 - 124, 146 - 156

OrderNo: 676073846 Clay
676073899 Black



Flanell shirt, Carpenter ACE

Björnkälder' s new flannel shirt in a nice, brushed cotton quality. Practical chest pockets with a pen pocket on the left side. Öko-Tex certified. Fabric: Flannel, 100% cotton, 230g/m².

Size: S - 3XL

OrderNo: 964074069 Navy/blue
964074099 Black/grey



Flanell hood, Carpenter ACE

An updated version of the flannel shirt, now more trendy and cool! The flannel hooded shirt has a zipper closure and a Carpenter ACE transfer on the side that gives it a cool look. Practical chest pockets with a pen pocket on the left side. Single jersey inside hood. Fabric: Flannel, 100% cotton, 230g/m².

Size: S - 3XL

OrderNo: 967074069 Navy/blue
967074099 Black/grey





Soft shell jacket, Carpenter ACE

Water repellent jacket in a three-layer soft shell ripstop with good breathability. The ripstop creates an extra strong quality that prevents tears and minimizes damage from holes and is still soft and comfortable. An extra detail is the printed pattern on the fleece inside the jacket. Water tight zipper. On the inside is a pocket and cell phone pocket. There is a removable key band in the right pocket. Fabric: Softshell/ripstop, printed fleece inner, 85% polyester/15% polyuretane, 285g/m².

Size: XS - 3XL

OrderNo: 928076146 Clay
928076199 Black



Bonded fleece jacket, Carpenter ACE

Wind and water resistant fleece jacket. The material is a three-layer fleece with a black mesh on the inside. Reinforced with polyamide. Jacket has many functional pockets including a practical inner pocket. There is a removable key band in the right pocket. Öko-Tex certified. Material: Laminated fleece, 100% polyester, 325g/m². Quality has a water resistance of 5000mm/H₂O and breathability of 2000g/m²/24h. The jacket does not have taped seams.

Size: XS - 3XL

OrderNo: 930079746 Clay
930079769 Navy
930079799 Black



Sweatjacket with hood, Carpenter ACE

A hooded jacket with a designed transfer on the left side, moulded inner for a comfortable feel and vulnerable areas reinforced with canvas. On the inside there is an inner pocket and cell phone pocket. There is a removable key band in the right pocket. The garment is pre-washed which results in a softer feel and reduced risk of shrinkage. Differences in shading may occur. Fabric: Tricot, 80% cotton / 20% Polyester, 340g/m².

Size: XS - 3XL

OrderNo: 929079846 Clay
929079869 Navy
929079899 Black





New!

Sweatshirt with full zip

Sweatshirt with full zip and two pockets, the right pocket has an extra pocket with zipper. Fabric: 80% cotton/20% polyester, 340g/m²

Size: XS - 4XL

OrderNo: 933079869 Navy
933079899 Black



Björnkläder®



New!

Sweatshirt with half zip

Sweatshirt with half zip and two pockets, the right pocket has an extra pocket with zipper. Fabric: 80% cotton/20% polyester, 340g/m².

Size: XS - 3XL

OrderNo: 064079869 Navy
064079899 Black



Polo shirt, Carpenter ACE

Polo shirt in the most beautiful cotton. The garment is pre-washed which results in a softer feel and reduced risk of shrinkage. Differences in shading may occur. Öko-Tex certified. Fabric: Tricot, 100% cotton, 230g/m².

Size: XS - 4XL

OrderNo: 060071146 Clay
 060071167 Fog blue
 060071169 Navy
 060071199 Black



T-shirt with print, Carpenter ACE

T-shirt with a designed print on the left side. The garment is pre-washed which results in a softer feel and reduced risk of shrinkage. Differences in shading may occur. Öko-Tex certified. Fabric: Tricot/Single jersey, 100% cotton, 230g/m².

Size: XS - 4XL

OrderNo: 062179501 White
 062179520 Orange
 062179546 Clay
 062179569 Navy
 062179599 Black



T-shirt, Carpenter ACE

The same t-shirt as above, but without the designed transfer. Öko-Tex certified. Fabric: Tricot/Single jersey, 100% cotton, 230g/m².

Size: XS - 4XL

OrderNo: 062079501 White
 062079546 Clay
 062079567 Fog blue
 062079569 Navy
 062079599 Black



New!



Bag, Carpenter ACE

Practical bag for your garments and your tools! Height 33 cm, length 58 cm, width 30 cm. Volume about 57 litres.

OrderNo: 099070099

Beanie, Carpenter ACE

Rib-stitched beanie in nice cotton. Öko-Tex certified. Fabric: 100% cotton. Black.

OrderNo: 096070099



Cap, Carpenter ACE

Trendy cap with the right look! Fabric: Canvas, 100% cotton, 350g/m². Black.

OrderNo: 097070099



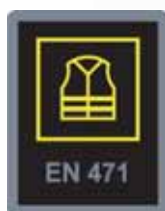
Belt, Carpenter ACE

Belt in cotton with ACE transfer, on the backside of the buckle is a bottle opener. Fabric: 100% cotton, buckle in metal. Length 130cm. Black with print.

OrderNo: 080070099

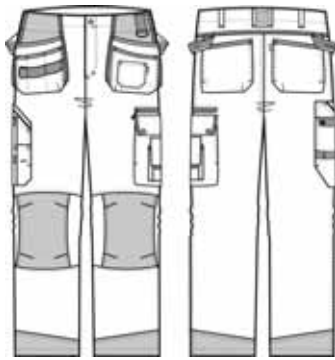


Jubilee Carpenter!



New!
EN 471
Class 1

Björnkläder®



Fabric description

Function: Soft, comfortable, with good durability and resistance against wear and tear. *Construction:* Twill *Composition:* 100% cotton *Weight:* 350g/m²

Reinforcement fabric

Function: Extremely durable *Construction:* Two-shaft binding *Composition:* 100% polyamide *Weight:* 220g/m²

Tool pocket trousers, Jubilee Carpenter

The trousers have a modern fit. To increase garment life, we have reinforcements on stress points. Useful side pockets, D-rings and smart solutions for your keys. An ID-card holder is placed under one of the tool pockets. The ruler pocket is redesigned and an extra leg pocket with zipper has been added. The knee pockets are higher and improved. Use approved long kneepads, order nr: 972 294, 972 290 or 972 292. Cotton. Weight: 350 g/m².

Size: 44 - 60 (Black: 44 - 64), 96 - 120, 146 - 156

OrderNo: 665000436 Grey
 665000499 Black
 665000469 Navy
 665000442 Khaki

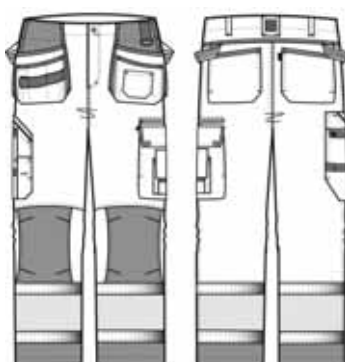


Toolpocket trousers class 1

Toolpocket trousers class 1. The trousers have an excellent fit and are reinforced on stress points. Large and durable side pockets, D-rings and smart solutions for your mobile phone, keys etc. An ID card pocket is placed under the right toolpocket. Practical ruler pocket and extra leg pocket with zipper. Knee pockets have been improved with new design and measurements according to new CE requirements. Use approved long kneepads, order nr: 972 294, 972 290 or 972 292. Cotton, 350 g/m².

Size: 44 - 64, 96 - 120, 146 - 156

OrderNo: 665170469 Navy
 665170499 Black



New!

Jubilee Carpenter, also for women!



Björnkläder®

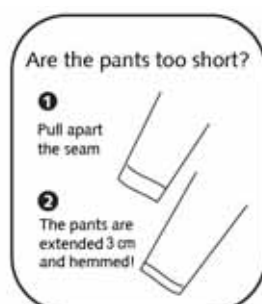


Women's Jubilee Carpenter trousers

The trousers have been designed to fit women! They have a double hem so you can extend the length by opening a seam, the longer leg is pre-hemmed and ready wear. We have reinforcements on stress points. Useful side pockets, D-rings and smart solutions for your keys. An ID-card holder is placed under one of the tool pockets. The ruler pocket is re-designed and an extra leg pocket with zipper has been added. The knee pockets have also been totally re-designed. Use approved long kneepads, order nr: 972 294, 972 290 or 972 292. Cotton. Weight: 350 g/m².

Size: Black: 34 - 50, Cerise: 36 - 48

OrderNo: 640000423 Cerise
640000499 Black



Trousers adjusted to female curves!



High Water trousers, Jubilee-Carpenter

Shorter legs make a difference on hot days! Especially during spring and summer when they cool you down. On places where wear and tear is extra tough, we have put reinforcements to prolong the life span. The core material is steady 350-gram cotton. You find id-card pocket, toolpockets, backpackets, ruler pocket and a leg pocket with mobile phone pocket. We also have a zipped leg pocket where you can place your wallet during sunny days when you do not wear a jacket. Your knees are of course protected when you make use of the pockets for the kneepads. Use approved short kneepads, order no: 972291 or 972293.

Size: 44 - 60

OrderNo: 670070469 Navy blue
670070499 Black

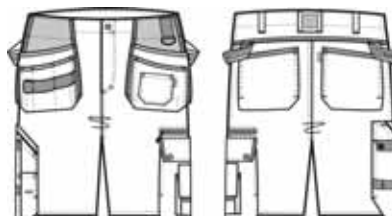


Carpenter Jubilee shorts

The shorts have a new modern fit and to increase garment life, we have reinforcements on stress points. Usefull side pockets, D-rings and smart solutions for your keys. An ID-card holder is placed under one of the tool pockets. The ruler pocket is re-designed and an extra leg pocket with zipper has been added. Weight: 350 g/m².

Size: 44 - 60

OrderNo: 033000436 Grey
033000469 Navy
033000499 Black

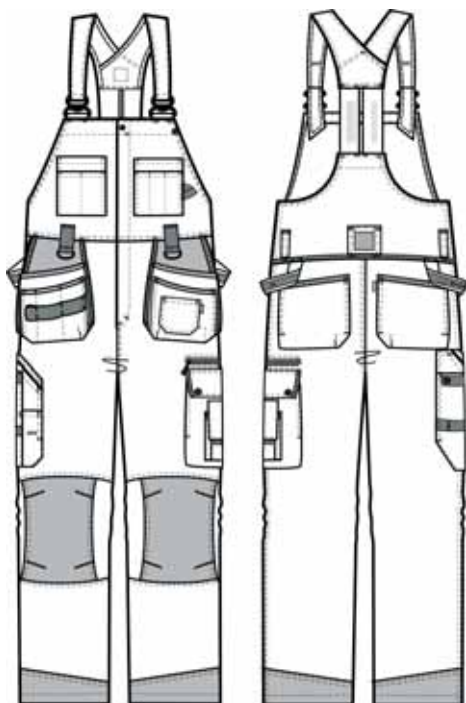


Bib dungarees, Jubilee Carpenter

Modern fit, cotton with strong reinforcements. Plenty of pockets, tool pockets, back pockets, side and ruler pockets. Mobile phone pocket and a security pocket with zipper for your wallet or similar. Key holder and D-ring. ID-card holder. Knee pockets of the new higher CE standard. Use approved long kneepads, order nr: 972 294, 972 290 or 972 292. 100% cotton, weight: 350 g/m².

Size: 46 - 60, 100 - 120, 148 - 154

OrderNo: 156000436 Grey
 156000469 Navy
 156000499 Black



New!

Knee pads of extra thick rubber/PU

Our thickest knee pads of rubber/PU. The combination of rubber and polyurethane gives high comfort. The knee pads form around your knee, which means you will stand stable also on your knees. The kneepad is approved according to EN 14404.

OrderNo: 972294 290x147x30 mm



Kneepads of rubber

Strong knee pads in black rubber. The knee pads are available in two lengths. Which length is suitable is described beside the trousers. The knee pads form around your knee, which means you will stand stable also on your knees. Kneepad 972290 is approved according to EN 14404.

OrderNo: 972290 290x147x16 mm
 972291 240x147x16 mm



Kneepads of polyethene

Strong knee pads in grey polyethene. The knee pads are available in two lengths. Which length is suitable is described beside the trousers. Kneepad 972292 is approved according to EN 14404.

OrderNo: 972292 290x147x20 mm
 972293 240x147x20 mm



Toolpocket vest, Jubilee Carpenter

A new developed toolpocket vest that makes carrying easier! We have given the shoulder part a soft lining and a new cut that spreads the weight better. Straighten the stretch belt around your waist and the weight moves to your hips. Comfortable. Four reinforced toolpockets, two breast pockets, bits pocket and a leaning mobile phone pocket makes it easier to answer the phone. A net across the back and upper front gives you ventilation on hot days and during hard work. Cotton 350 g/m². Black.

Size: S - 3XL

OrderNo: 447070499



Jacket, Jubileums-Carpenter

Rough jacket in 100% cotton, new design with a better fit. Pre-bent arms gives you a good work position and maneuverability. Arms are also reinforced where needed. Adjustable waist. Two large breast pockets, two side pockets, inner pocket and mobile phone pocket. There is also an ID-card holder, a D-ring and a key-holder. 350g/m².

Size: XS - 3XL

OrderNo: 722070469 Navy blue
722070499 Black



Jubilee Carpenter sweat jacket

A very smooth sweat jacket with good maneuverability and fit. We chose a sweat material in strong cotton/ polyester to achieve this smoothness and reinforced it with polyamide to handle the rougher conditions of a working environment. All the pockets you need and a smart holder for ID cards. A smart look is included in the price! 80% cotton/20% polyester. 340g/m².

Size: XS - 3XL

OrderNo: 920009899 Black/grey
920009869 Navy/grey



Jubilee Carpenter Fleece Vest

A vest which can be worn all year. The fleece gives you warmth and transports moist away. The vest has been reinforced with polyamide, has a pocket with zipper, a mobile phone pocket and a smart key-holder. Colour: Black/grey. 100% polyester, 320g/m².

Size: XS - 3XL

OrderNo: 454009899



Björnkläder®

Our classic Carpenter trousers of 100% cotton!



Fabric description

Function: Soft, comfortable, with good durability and resistance against wear and tear. *Construction:* Twill *Composition:* 100% cotton
Weight: 350g/m²

Reinforcement fabric

Function: Extremely durable
Construction: Two-shaft binding
Composition: 100% polyamide
Weight: 220g/m²



Tool pocket trousers

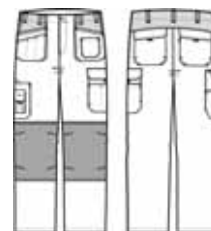
Our classic tool pocket trousers of 100% cotton.

Size: 44 - 64, 96 - 120, 146 - 156

OrderNo: 206700469 Navy

Use fitting short knee pads
order no: 972 291 and 972 293!

Twenty-Four-Seven - practical and comfortable!



Use fitting long knee pads
order no: 972 294, 972 290
and 972 292!

Toolpocket trousers Niche

Toolpocket trousers, broad loops hold the trousers in place even when the pockets are heavily loaded. Reinforced toolpockets with different sections for small tools and a pocket for the tape measure. Pouch pockets with flaps at the back. Leg pockets, ruler pocket and mobile phone pocket. Reinforcements on the knees. You put the kneepads into the knee pockets from inside to keep them better in place. ID-card pocket.

Size: 44 - 60, 96 - 120, 146 - 156

OrderNo: 213172438 Dark grey/black
213172441 Light khaki/dark grey
213172469 Navy/black
213172499 Black/black

Fabric description

The garments are made of 65% polyester/35% cotton. Weight 245 g/m². For your comfort the fabric has a brushed inside. It is strong, has a good colourfastness and minimal shrinkage.



Jacket Niche

Jacket with a high, protective collar, pouch breast pockets, side pockets, inner pocket with zipper. Inner mobile phone pocket, loops for keeping the handsfree cable in place. Extended back protects against wind.

Size: XS - 3XL

OrderNo: 709002438 Dark grey/black
709002441 Light khaki/dark grey
709002469 Navy/black

Björnkläder®