

A man wearing a yellow hard hat with safety glasses, a red and black jacket, and black pants is standing on a metal staircase. He is smiling and looking towards the camera. The background shows industrial equipment, including a blue fan and various pipes.

Stay dry and
warm in Sky Dry!

Sky Dry are our most advanced garments for outdoor use!

We developed, tested, improved and re-tested before we were satisfied. Extra care has been made on cuts, fit and pockets placement to get best functionality. Arms and legs are pre-bent for improved mobility and reflex details give you more visibility by the road. We carefully selected a fabric that is strong and wind and water proof. Guaranteed "100% non cotton" like all technical fabrics with these characteristics. "Fully taped", all seams are taped. The fabric is smooth and soft even though it is strong and durable. Water gauge 5 000 mm, breathability 5 000 g /m²/h. The fabric has a discrete melange pattern (except the black, which is solid black) - new for this season!



Sky Dry shell jacket

The shell jacket is your outer layer when you dress according to the "Layer on layer principle". The hood is removable, high collar, flap over the zipper, adjustable waist to protect you from wind and cold and body heat inside. The jacket has lots of pockets, including an ID-card solution which is very usable. A light, smooth and functional all-year-round-jacket! Reflex details make you more visible at night! 190g/m², 5000mm, 5000g/m².

Size: XS - 3XL

OrderNo: 741076821 Rust melange
741076838 Grey melange
741076869 Navy melange
741076899 Black solid



Fabric description

741076821	100% polyester
741076838, 69	73% nylon/27% polyester
741076899	100% polyamide/nylon

Sky Dry lined and unlined trousers!

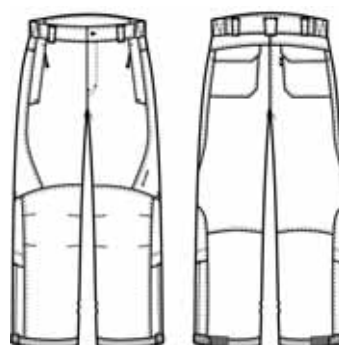
Sky Dry shell trousers



Shell pants with side and back pockets that can close, D-ring in the right pocket, formed knee, and snow lock. Pant legs can open and are reinforced at the bottom. Reflective details for high visibility. Fabric: 100% Nylon, 190g/m², Quality has a water resistance of 5000mm/H₂O and breathability of 5000g/m²/24h. Taped seams. Black.

Size: XS - 3XL

OrderNo: 221076899



Sky Dry winter trousers

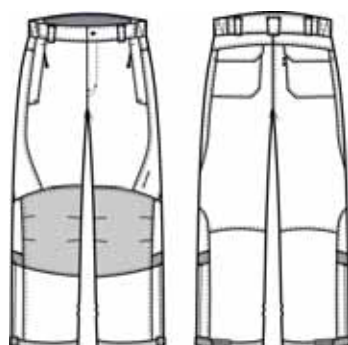
Our best trousers if you need wind and water proof trousers for outdoor work. The waist band is elastic but you can have your own belt. Side and backpockets can be closed, the trousers have pre-bent knees, snow locks and are openable near the foot so you can put them on and off more easily. The lining is smooth and light with a weight of 80 g/m². 190g/m², 5000mm, 5000g/m².

Size: XS - 2XL

OrderNo: 223076838 Grey melange
223076899 Black solid

Fabric description

223076838	73% nylon/27% polyester
223076899	100% polyamide/nylon



Sky Dry winter jacket

Sky Dry winter jacket

Jacket with quilted lining, removable hood, high collar, and wind guard over the two-way zipper. Many practical pockets, ID card pocket, and D-ring in the right pocket. Reflective details for high visibility. On the inside there is a zippered pocket as well as a pen and cell phone pockets. There are ribbed cuffs on the inside of the sleeve opening. Zipper at the lower back for ease in printing, for example, company logos. Fabric: 100% Nylon, 190g/m². Quality has a water resistance of 5000mm/H₂O and breathability of 5000g/m²/24h. Taped seams. Black.

Size: XS - 3XL

OrderNo: 740076899



Björnkläder®



With reflex details!

Sky Dry winter parka

Maybe this is the most advanced garment we have constructed for foul weather! The fabric is wind and water proof and breathable. Pockets both on the inside and outside, including an A5 pocket, mobile phone pocket and pencil holder. The hood is removable. Arm ends have velcro closure. Waist and bottom have elastic bands. 160 g/m² lining. Reflex details make you more visible at night! 73% nylon/27% polyester, 190g/m². 5000mm, 5000g/m².

Size: Grey: XS - 3XL, Navy: XS - 4XL

OrderNo: 758076838 Grey melange
758076869 Navy blue melange



A wind and water proof, breathable shell jacket you can use all year!



Björnkläder®

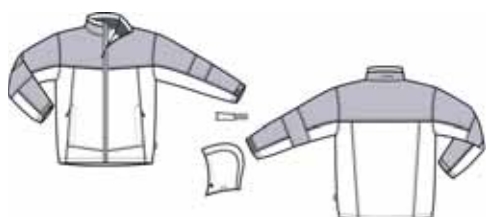


All-Year shell jacket

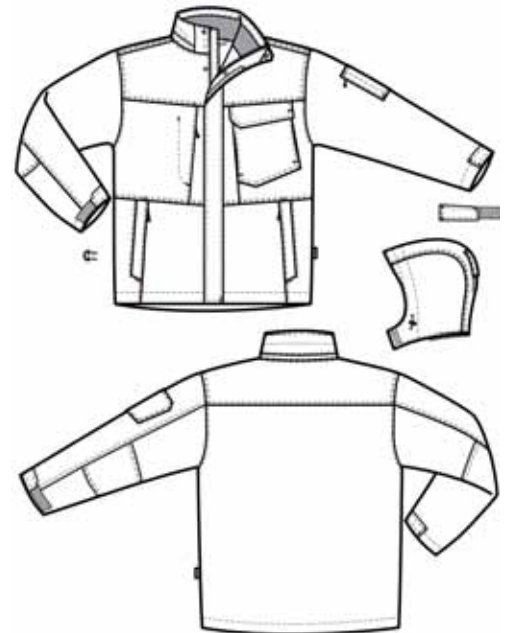
Wind and waterproof, breathable, all seams taped. If you need extra heat you could also wear our fleecjacket underneath. The collar has a fleece lining, the pockets are zipped and it has a hood. 100% polyamid, 190g/m². 5000mm, 5000g/m², taped seams.

Size: S - 3XL

OrderNo: 7003899 Dark grey/black
7006999 Navy/black



Rough winter jacket



Winter jacket ACE

Insulated jacket to complete our Carpenter ACE collection. The jacket has taped seams and is made of very strong structured polyamide. The jacket has a removable hood, high protective collar, sturdy flap over the zipper and adjustable bottom hem. It also has many pockets. Inside is a nice checkered pattern and you will find an inner and a mobile phone pocket as well as a zipper to open up the jacket to be able to print on e.g. the back. Fabric: 100% polyamide, 290g/m², Water gauge: 6000mm.

Size: XS - 3XL

OrderNo: 754077699

New!

Functional worker jacket!



Allround winter jacket

This is a functional worker' s jacket. The jacket has quilted lining and outer fabric that is breathable and wind and water proof. The seams are not taped, but the fabric withstands 5000 mm, so it can take a shower or two without problem. Fleece in the collar and many pockets, including an ID card pocket. 100% polyamid, 190g/m².5000mm, 5000g/m².

Size: XS - 3XL, Dark grey/black: S - 4XL

OrderNo: 739078736 Grey/black
739078738 Dark grey/black
739078769 Navy/black





Black winter parka

If you want to stay outside in all weathers. Outer fabric is wind and water proof and breathable. Body heat stays in the parka, the lining is also a bit thicker than normal to keep the warmth. You have ten pockets, or more than a dozen if you count the small ones. You also have a pocket for your i-pod or similar device. Black. 100% polyamid, 300g/m². 5000mm, 5000g/m².

Size: XS - 3XL

OrderNo: 748078899





Black winter vest

The vest is an excellent addition on chilly days when you need extra warmth. The vest has been added with water proof details on for example the shoulders. 6 pockets, including a mobile phone pocket. You can combine the vest with our Retro jacket to add even more warmth. Black. 100% polyamid, 300g/m². 5000mm, 5000g/m².

Size: S - 3XL

OrderNo: 458078899



Pilot jacket

A classic lumber cut, our jacket is a classic. A warm jacket, lined with sturdy 160 grammes lining. The collar is lined with pile for improved warmth. Reinforced at stress points. With many pockets! 100% polyester, 260g/m².

Size: S - 3XL

OrderNo: 738076569 Navy
738076599 Black

Comfortable, classic winter pilot jacket.

Fabric description

An easy-care fabric with a water- and dirt repellent finish. The fabric consists of 100% polyester, weight 260 g/m². The fabric is definitely durable.

Winter pilot jacket

Practical, comfortable pilot jacket enables good ease of movement. Perfect for service professionals and drivers who are always getting in and out of vehicles. This jacket has all the pockets you could ever want, including a special cell phone pocket. Cosy, warm pile lining and protective front storm flap keep out the wind and cold.

Size: S - 2XL

OrderNo: 751006536 Grey
751006569 Navy
751006599 Black





Winter boiler suit with knee pockets

The boilersuit is not completely waterproof but withstands water and wind. The reinforcements on shoulders and knees are however waterproof. We have two-way zippers on the legs to make it easier to put on and take off even with your boots still on. We also have knee pockets for knee pads and ruler pocket with button for knife. It has a quilt lining and removable hood. Navy blue. 100% polyester, 260g/m².

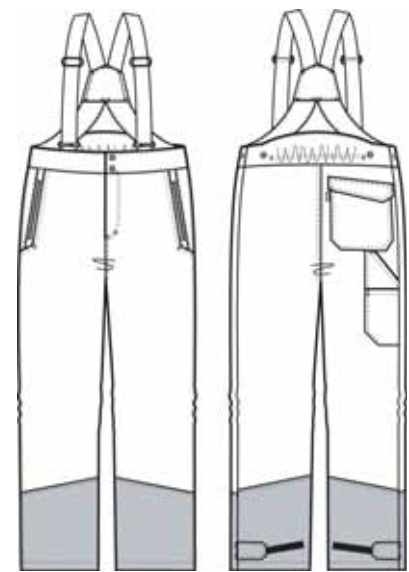
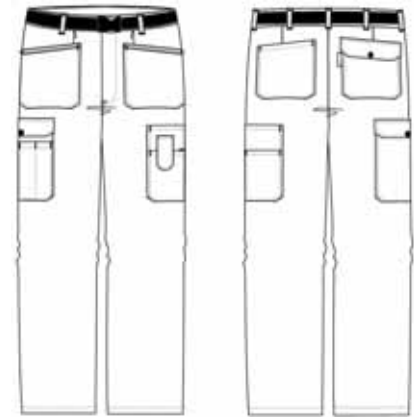
Size: S - 3XL

OrderNo: 876076569

Use fitting short knee pads
order no.: 972 291 and 972 293!



Comfortable winter trousers



Winter trousers

Winter trousers for workers, drivers, and service professionals. Less bulky lining compared to traditional squall pants. These trousers will never get in your way. External, reinforced pouch pockets. Double back pockets, one with flap. The leg pocket has room for pens, writing pad and cell phone. Belt included. 100% polyester, 260g/m².

Size: 46 - 60, 96 - 112, 148 - 154

OrderNo: 227206569 Navy
227206599 Black

The bibs you do not need to take off during the working day

Bib dungarees

Wind and water repellent polyester, quilted lining. Elastic braces, adjustable in length. Two-way zipper in the legs so that you can take the bibs off without removing your shoes. We also have added our famous "drop-seat" so that you can visit the toilet without taking the bibs off! 100% polyester, 260g/m².

Size: S - 3XL

OrderNo: 165006599 Black/black
165006569 Navy/black





Winter jacket, Jubilee Carpenter

Winter jacket of 100% cotton, reinforced at the elbows. Lined with pile except quilted in the arms. This is a perfect jacket for carpenters. You will find six pockets plus a small one for a pencil. Longer back and pile collar. 100% cotton, 350g/m².

Size: S - 2XL

OrderNo: 753070469 Navy
753070499 Black